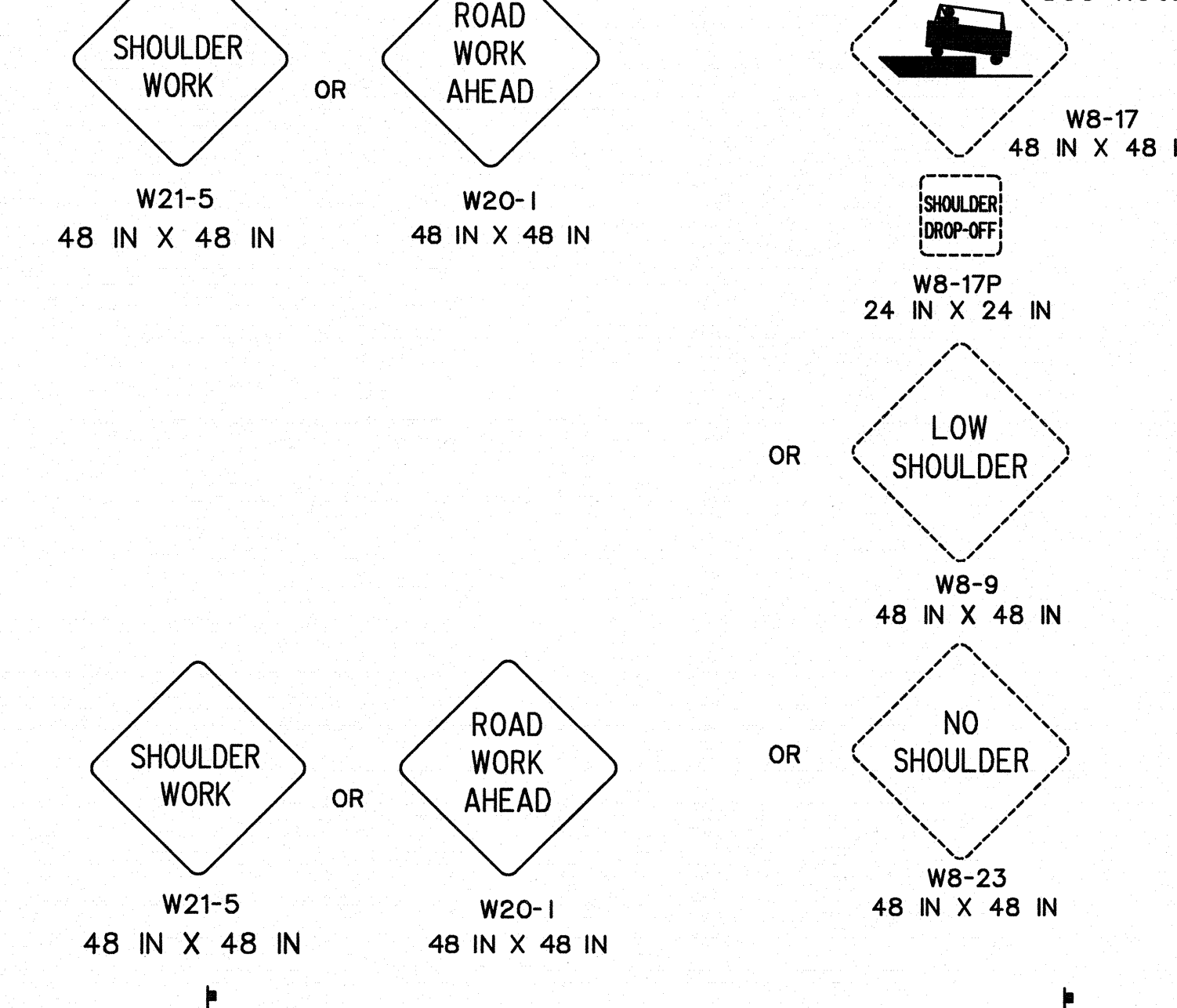
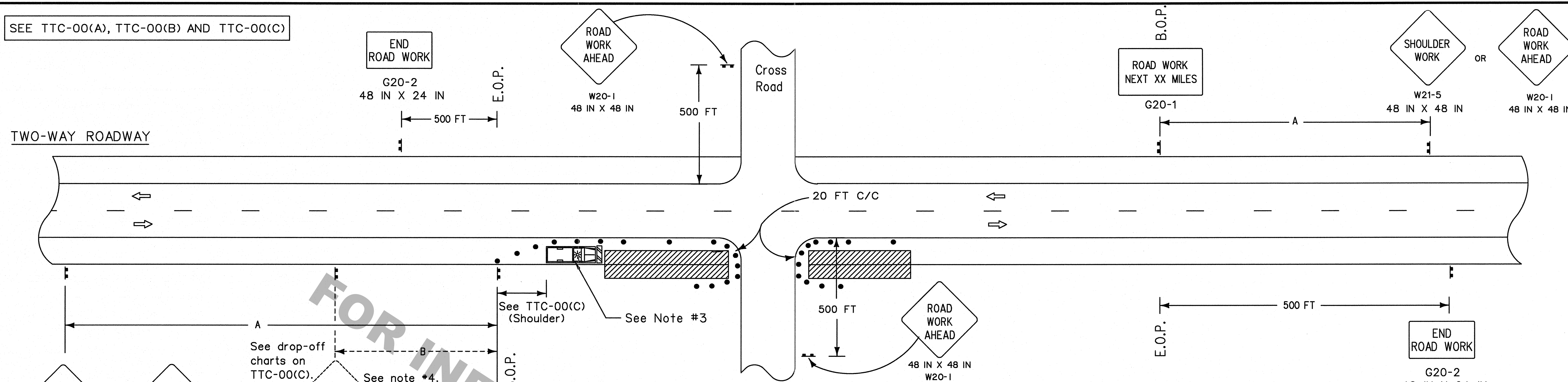


SEE TTC-00(A), TTC-00(B) AND TTC-00(C)

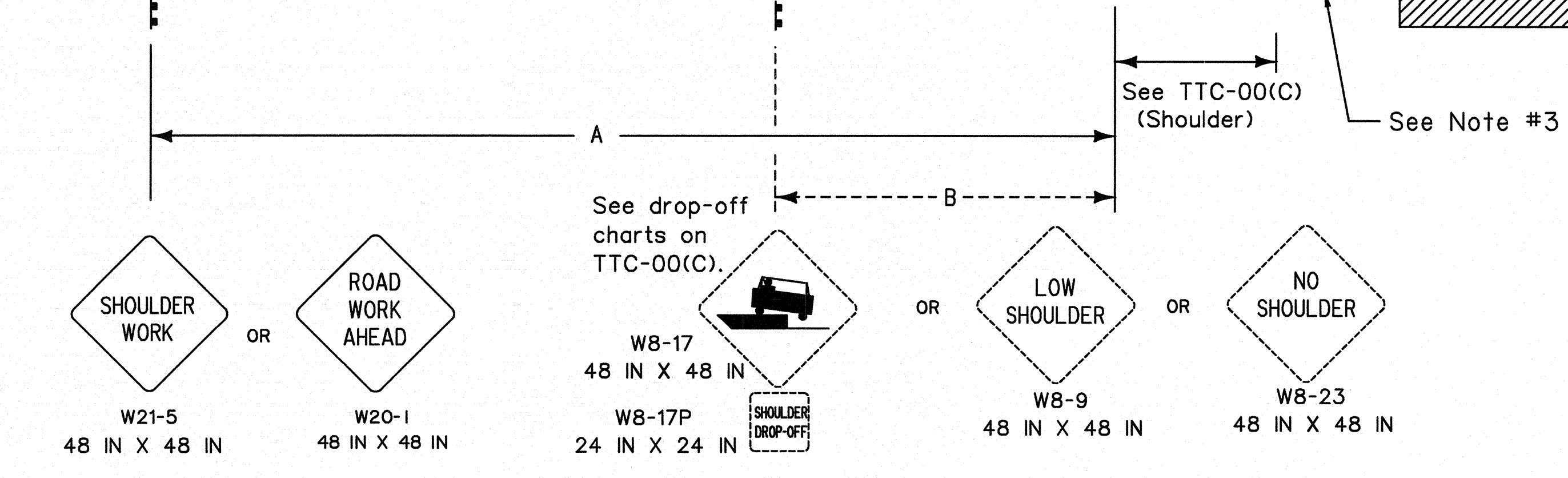
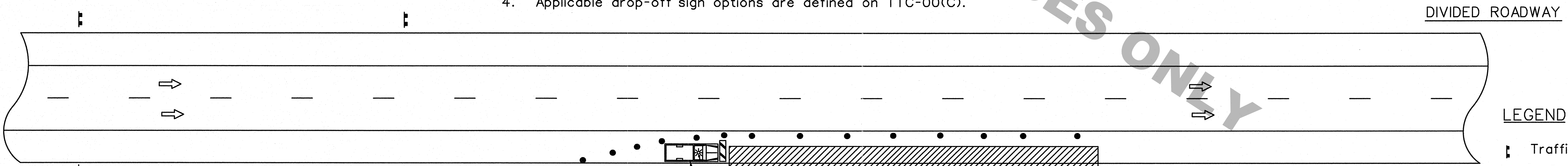


NOTES

- This sheet shall be used with the Temporary Traffic Control General Notes Sheets TTC-00(A), TTC-00(B) and TTC-00(C).
1. This layout represents the minimum traffic controls required for workers and equipment operating less than 15 feet from the traveled way for more than one hour. Less than one hour, see figure TA-4 of the MUTCD.
 2. No signs or barricades are required for equipment operating or work in progress greater than 15 feet from the traveled way. (See TTC-01).
 3. Work or equipment confined to a spot location (less than 200 feet) shall be marked by channelizing devices spaced at 25 feet or by a vehicle with an amber light visible to traffic. Work extending more than 200 feet of roadway length shall be marked with appropriate devices spaced as noted on TTC-00(C).
 4. Applicable drop-off sign options are defined on TTC-00(C).

SPEED LIMIT (prior to construction)	SPACING	
	'A'	'B'
≤ 40 mph	500 FT	250 FT
45-50 mph	1000 FT	350 FT
≥ 55 mph	1500 FT	500 FT

- See TTC-00(C) for minimum taper length and maximum device spacing for shoulder closure tapers.
- If horizontal curve radius is less than 300 feet, devices spacing shall be 25 feet.



LEGEND

- ⊥ Traffic Sign
- Channelizing Devices
- ▨ Type III Barricades
- ▨ Work Area
- ⇒ Direction of Travel
- Truck with Amber Light

ALL TTC STANDARDS SHOW MINIMUM CONSTRUCTION SIGNING.
ALL SITUATIONS SHALL BE REVIEWED AND/OR DESIGNED BY THE ENGINEER.
CONTRACTORS ARE RESPONSIBLE FOR COMPLYING WITH ALL TTC STANDARDS.

SHEET NUMBER	PARISH	DESIGNED BY	DATE
		J. COLVIN	02/13/2013
FEDERAL PROJECT	REVISION DESCRIPTION	CHECKED BY	DATE
		M.D. OROGNE	7.12.13
STATE PROJECT	BY	CHECKED BY	DATE
		J. COLVIN	7.12.13
APPROVED BY CHIEF ENGINEER			
TEMPORARY TRAFFIC CONTROL LAYOUT FOR WORK LESS THAN 15 FEET FROM THE TRAVELED WAY			
TTC-02			
TRAFFIC ENGINEERING			